



SUPPLEMENTAL BATHROOM SAFETY CATALOG:
BATHROOM SINKS, SHOWER RODS, ENCLOSURES AND BATHROOM ACCESSORIES



WHEN YOU NEED
BATHROOM SAFETY PRODUCTS,
THINK OF PONTE GIULIO FIRST.



Orvieto, Umbria, Italy. Home to Ponte Giulio Design and Production

We really are the Bathroom Safety Experts.

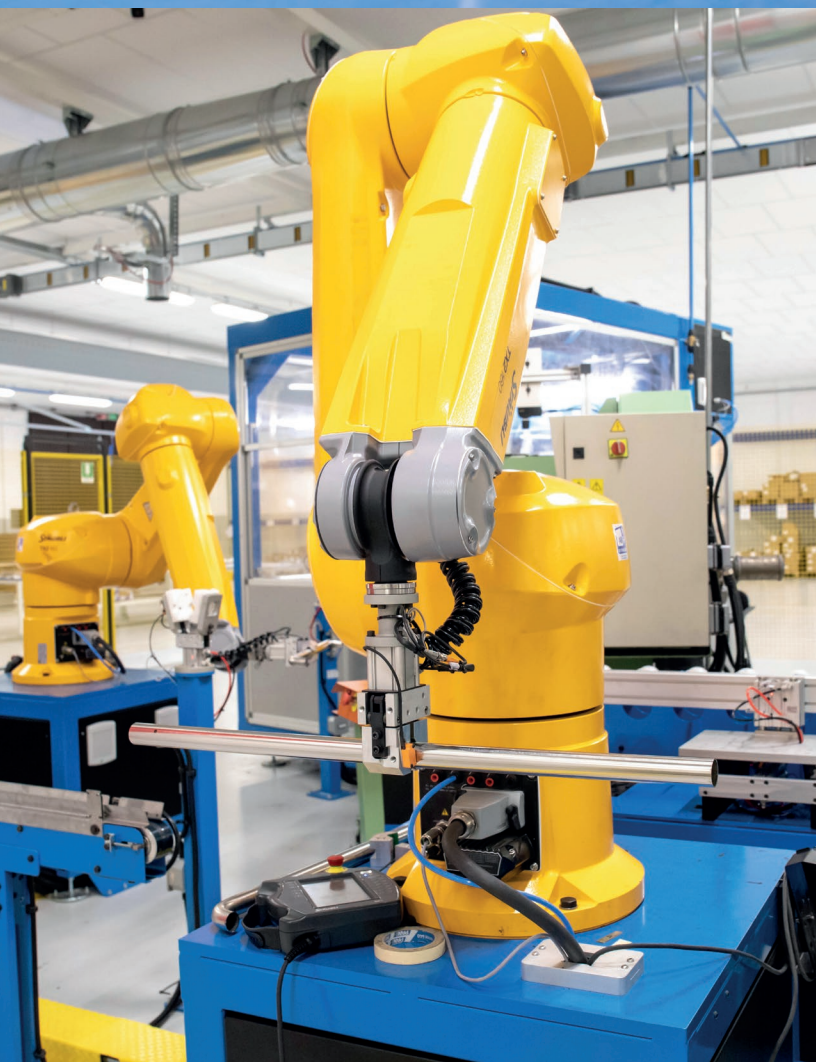
Ponte Giulio USA is the North American office and warehouse for our parent company which is located in Orvieto Italy. We manufacture Bathroom Safety Products – shower seats, shower enclosures, ergonomic sinks and grab bars – everything for accessibility in the bathroom.

Ponte Giulio has been manufacturing bathroom safety products for 50 years, always with safety and accessibility at the center of our design. Our engineers and designers constantly strive to create new products that will lead the market with innovation, style, function and beautiful aesthetics.

Our name is pronounced Pon-Tay Julie-O.

We offer products for commercial and residential installation. Architects, designers, contractors, builders and remodelers rely on Ponte Giulio to supply the best modern safety products for every application. Grab bars are the most frequently installed safety product and we offer a full range of products to choose from including Stainless-Steel, the workhorse of commercial projects.





INDEX

independent living



6 SINKS

Porcelain sinks
Acrylic stone



27 SHOWER

Shower enclosure
Shower curtain rod



45 ACCESSORIES

Bathroom accessories
Fasteners



See our General digital catalog for:

**GRAB BAR, SHOWER SEATS AND
FOLDING GRAB BARS**



B48CMM01WM, Mineral composite washbasin sink - G18UAS52, Prestigio plus straight grab bar
G18UAS51, Prestigio plus straight grab bar - F47ANS01, Basket - F47ANM11, Shelf

SINKS

Improve your comfort
in style with sinks
from Ponte Giulio.
Create a clean, modern,
stylish and accessible wash area
in any bathroom.

Accessible sinks are wall mounted and featured
curved fronts for more comfortable access.

All sinks ship buy freight on a pallet to arrive safely.
Call for a shipping estimate.



SINKS



PAGE 10



PAGE 12



PAGE 14



PAGE 16



PAGE 16



PAGE 18



PAGE 20



PAGE 22



PAGE 23



PAGE 24



Italian Designer Sink

B43CMS01WB

Color / Finish: WB-White

Material: Porcelain

- Sink is 27 ½" wide, 22 ½" deep and 6" high
- Basin is 19" wide, 5 ¼" deep
- Beautiful, modern sink with 330-pound load capacity
- Support bracket which attaches to sink is sold separately, B41DCS01
- Wall-mounting hardware not included, use screws, bolts, anchors appropriate for wall material



Top view



Side view

OPTIONAL



- **B41DCS01**
- Support Bracket




- **H52HAS24**
- Drain



B43CMS01WB Sink - F47ACS02 Liquid soap dispenser

www.pontegiulio.com ☎ 877.766.8301

Ponte Giulio  11



Ergonomic Sink with Curved Front and Side Mount Faucet

B42CNS01WB

Color / Finish: WB-White

Material: Porcelain

- Sink is 30 1/4" wide, 20 11/16" deep, 9" high
- Faucet mount is off-set to the side
- Extra space on sides and back of sink
- 330-pound load capacity
- Curved front allows for comfort & efficiency when seated
- Wall-mounting hardware not included, use screws, bolts, anchors appropriate for wall material
- Mounting hardware for wood stud installation available separately, Y90SES42



Top view



Front view

OPTIONAL



- Y90SES42
- Screws & Dowels kit



- H52HAS24
- Drain





Raised Edge Perimeter Sink

B43CMS03

Color / Finish: WB-White

Material: Porcelain

- Sink is 25 3/4" wide, 17 3/4" deep 7" high
- Center mount faucet
- Basin measures 20 1/2" wide, 10 1/4" deep
- 330-pound load capacity
- Support brackets which attach to sink sold separately, B41DCS01
- Wall mounting hardware not included, use screws, bolts, anchors appropriate for wall material

OPTIONAL



- **Y90SES42**
- Screws & Dowels kit



- **B41DCS01**
- Support Bracket
- Painted



- **B41DDS26**
- Self-supporting frame



- **H52HAS24**
- Drain



B43CMS03, Raised edge perimeter sink - G18UAS51, Prestigio plus straight grab bar - F47ANS02, Basket

Ergonomic Sink with Curved Front and Center Mount Faucet

B40CMS07WB

Color / Finish: WB-White

Material: Porcelain



- Sink is 25 ¼" wide, 22" deep, 7" high
- Basin is 22" wide, 13 ½" deep, 5 ¾" high
- Faucet mount is in the center of the sink
- Extra space at the back of the sink for storage
- Great for small spaces with a 330-pound load capacity
- Wall-mounting hardware not included, use screws, bolts, anchors appropriate for wall material
- Mounting hardware for wood stud installation available separately, Y90SES42



- **Y90SES42**
- Screws & Dowels kit



- **H52HAS24**
- Drain

Ergonomic Porcelain Sink with Curved Front

B40CMS10WB

Color / Finish: WB-White

Material: Porcelain



- Popular Style
- Sink is 27" wide, 21" deep, 9" high
- 330-pound load capacity
- Curved front for easy wheelchair or seated access
- Lip on edge helps wheelchair users pull themselves closer
- Wall-mounting hardware not included, use screws, bolts, anchors appropriate for wall material
- Mounting hardware for wood stud installation sold separately, Y90SES42
- Use fixing bracket B41DCS01, or B41DCS38 with this sink

OPTIONAL



- **Y90SES42**
- Screws & Dowels kit



- **B41DCS01**
- Support Bracket
- Painted



- **B41DCS38**
- Single Brackett
- Stainless



- **H52HAS24**
- Drain



B40CMS07, Ergonomic sink



Ergonomic Sink with Elbow Rests and Triangle Shaped Basin

B40CMS01WB

B41DCS01 – Support Bracket

Color / Finish: WB-White

Material: Porcelain

- Sink is 26 ½" wide, 23" deep, 8 ¾" high
- Basin is triangle shaped and sink has curved front for seated access.
- Extra space for storage on side & back of sink
- 330-pound load capacity
- Support bracket which attaches to sink not included, sold separately, B41DCS01
- Wall-mounting hardware not included, use screws, bolts, anchors appropriate for wall material
- Mounting hardware for wood stud installation available separately, Y90SES42



Front view



Side view



Top view

ADDITIONAL



- **B41DCS01**
- Support Bracket

OPTIONAL



- **Y90SES42**
- Screws & Dowels kit



- **H52HAS24**
- Drain



B40CMS01WB Sink



Acrylic Stone Sink with Stainless Steel Hand Pull / Towel Bar

B46CMM17W3 – 35" x 21" x 7"

B46CMM18W3 – 47" x 21" x 7"

Color / Finish: W3-Alpine White

Material: Acrylic Stone, Stainless Steel

- Best Seller
- Hand pull allows those seated to pull themselves up to sink
- Hand pull is stainless steel and can be used as a towel bar
- 330-pound load capacity
- Support bracket with hardware included to attach bracket to sink
- Wall-mounting hardware not included, use screws, bolts, anchors appropriate for wall material
- Acrylic stone is a generic name for Corian or LG Hi-Macs



Front view



Side view



Top view

OPTIONAL



- **H52HAS24**
- Drain



46CMM17W3 Sink - G18UAS51 Straight grab bar - F47ANM11W3 Shelf - F47APS08 Wall-hung cabinet - F18UWS02 Side mount grab bar



Acrylic Stone Sink with Stainless Steel Hand Pull / Towel Bar

B46CNM22W3

Color / Finish: W3-Alpine White

Material: Acrylic Stone, Stainless Steel

- Sink is 32" wide, 25" deep, 8" high
- Basin is 18 ½" wide, 15 ¼" deep, 3 ½" high
- Stainless steel hand pull / towel bar for easy access with a 330-pound load capacity
- Drain covers sold separately, H52HAM16 or H52HAS14
- Wall-mount hardware not included, use screws, bolts, anchors appropriate for wall material
- Acrylic Stone is a generic name for Corian or LG Hi-Macs
- Sink has fixing frame, no additional support brackets needed



Side view



Top view

OPTIONAL



- **H52HAS22**
- Free-flow, lowered and siphoned washbasin drain



- **H52HAS14**
- drain



HUG Mineral Composite Washbasin Sink

B48CMM01WM – 27" x 21" Center basin

Color / Finish: WM-Hemp White

Material: Mineral composite

- Sink is 27" wide, 21" deep, 7 ½" high
- 330-pound load capacity
- Sink is Hemp White (WM)
- Towel bar fits on side, optional, sold separately below
- Basin is 5 ½" deep, 25¾" wide, 14 ¼" deep
- Mineral Composite is a synthetic material formed by at least 75% stone from the Dolomites. It is an ecological material, chemical resistant, durable with high impact strength.
- Support brackets for sink, B4IDCR33 + B4IDCL33, sold separately below.



Front view



Side view



Top view

OPTIONAL



- **H52HAS24**
- Drain



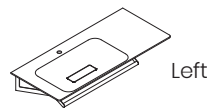
- **Y90SES42**
- Screws & Dowels kit



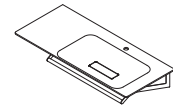
- **F47AML03N2** left side
- **F47AMR03N2** right side
- Towel Bar



- **B4IDCL33** left side
- **B4IDCR33** right side
- Under-top fixing bracket



Left



Right

HUG Acrylic Stone 48” Washbasin Sinks

B46CML23W3 – 48” x 21” x 7 ½” Left side large basin

B46CMR23W3 – 48” x 21” x 7 ½” Right side large basin

Material: Acrylic Stone (similar to Corian or LG Hi-Macs)

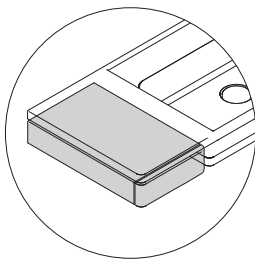
Color / Finish: W3- Alpine White

- Bright towel bar included with sink
- Large basin sinks are 48” wide, 21” deep, 7 ½” high, the basin is 26” wide, 14 ½” deep, 4 ½” high with, 9 ¾” wide x 3 ⅛” rectangular shaped drain cover
- Front mount towel barpull in bright (N2) included with each sink has 330-pound load capacity
- 330-pound load capacity on sink
- Mounting brackets, B41DCL34 and B41DCR34, are required and sold separately below
- Optional single drawer or two drawer chest available, sold separately below
- Drawers available in BZ-Mid-Blue, IB-Silk, WD-Pure White
- Call for availability

OPTIONAL



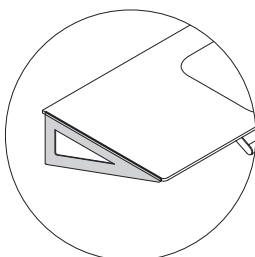
- **H52HAS24**
- Drain



- **F47AIS01xx**
- Single Under Counter Drawer
- 13” x 5” x 21”



- **F47AIS02xx**
- Double Under Counter Drawers
- 13” x 17” x 21”



ADDITIONAL



- **B41DCL34WE** left side
- **B41DCR34WE** right side
- Under-Top Fastening Bracket to attach and support sinks



Drawer Color Options



BZ Mid Blue



IB Silk



WD Pure White





F18XOS05DM, Shower slide set - G18UAS44DM, Straight grab bar

SHOWERS

Our unique Shower enclosure design helps caregivers assist a loved one with personal care while maintaining their dignity and a sense of independence.

Shower slide sets add safety to the shower with a slide bar that supports weight and acts as a hidden in plain sight safety bar.



G18UAS51, Prestigio plus straight grab bar - Y87JOS04C1, Ergonomic hand shower holder

SHOWERS



PAGE 30



PAGE 32



PAGE 35



PAGE 36



PAGE 37



PAGE 38-39



PAGE 40



PAGE 41



PAGE 41



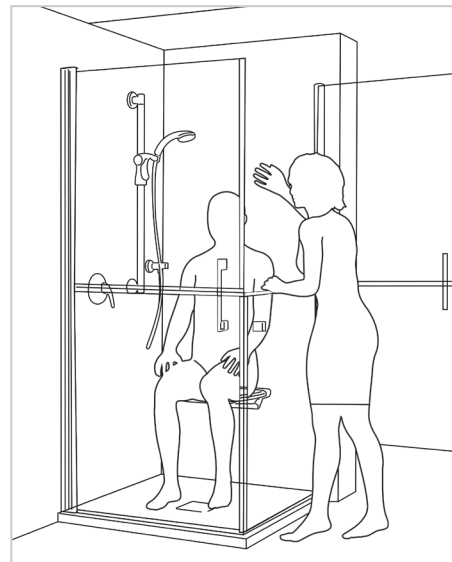
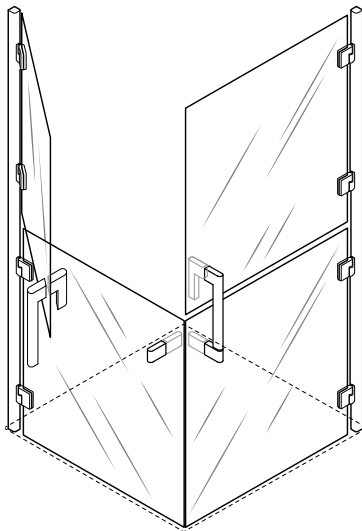
PAGE 42

HUG Split Door Shower Enclosure

C53FBS21

Materials: Aluminum frame, ABS, Safety Glass

- Enclosure is 36" wide, 36" deep, 77" high
- Split door tops open independently of bottoms
- Clear, tempered safety glass is 6mm thick
- Magnets provide secure closure
- Shower tray (base) non included
- Split door shields caregiver from shower spray
- Doors open wide for easy access
- Corner installation makes efficient use of space
- Door could be installed in curbless shower / wet room or with a shower tray





C53FBS21, Split door shower enclosure - G18UAS50, Prestigio plus straight grab bar - Y87JOS04C1, Ergonomic hand shower holder

SOLO

Shower Slide Set, Stainless Steel

F18XOS01xx – 36"
F18XOS03xx – 28"

Color / Finish: N1 – Satin Brushed, N2 – Polished

Materials: Stainless Steel



- Set includes: slide bar, sliding install brackets, shower head, shower head holder and flex hose
- Available in 2 lengths: 36" and 28"
- Slide bar is 3/4" diameter 304 stainless steel
- Slide bar is BOTH a slide column and a support bar
- Load capacity on slide bar is 250 pounds
- The shower head has 5 functions
- Anti-twist flex hose is 78" long (36") or 60" (28")
- The shower head holder is easy to glide along the shower column
- Elegant Shower Slide is safety hiding in plain sight
- Previously called "Eternal Shower Slide Set"

OPTIONAL



- **H51GIS04**
- Hand shower holder

F18XOS01, Shower slide set



SOLO

Eternal Shower Slide Set, Matte Black

F18XOS05DM – 36"

F18XOS07DM – 28"

Color / Finish: DM – Matte Black

Materials: Stainless Steel, ABS



- Set includes: slide bar, sliding install brackets, shower head, shower head holder and flex hose
- Available in 2 lengths: 36" and 28"
- Slide bar diameter is ¾" 304 stainless steel
- Slide bar is BOTH a slide column and support bar
- Load capacity on slide bar is 110 pounds
- The shower head has 3 functions
- Anti-twist flex hose is 78" (36") or 60" (28")
- Everything included in this set is Matte Black
- Previously called "Eternal Shower Slide Set"

OPTIONAL



- **H51GIS04**
- Hand shower holder

Prestigio PLUS

Shower Slide Grab Bar Set, 1 1/4" Diameter

F18XOS43xx - 35"

F18XOS41xx - 28"

Color / Finish: N1 – Satin Brushed, N2 – Polished

Materials: Stainless Steel, ABS

- Set includes vertical grab bar, shower head, shower head holder and flex hose
- Available in 2 lengths
- Grab bar acts as a shower column slide bar for true safety
- Grab bar has 1 1/4" diameter
- Load capacity is 450 pounds
- Shower head has 3 functions
- Anti-twist flex hose is 60"



OPTIONAL



- **H51GIS04**
- Hand shower holder

Ergonomic Hand Shower Holder

Y87JOS04xx – Colors
 Y87JOS04C1 – Chrome

Color / Finish: B1-Blue, B2-Light Blue, D1-Black, D2-Light Gray, G1-Grass Green, G2-Light Green, I1-Ivory, I2-Biscuit, R1-Red, W1-White, Y1-Bright Yellow, C1-Chrome

Materials: ABS

- 3 ¾" wide, 4 ½" deep, 6 ½" high
- Attach to vertical grab bars
- Holds all standard hand-held shower heads
- Extremely easy to move and adjust height
- Use in place of a shower slide – mount a grab bar and have safety hiding in plain sight
- May be added to existing 1 ¼" diameter grab bar
- Colors match PRO Series vinyl coated grab bars



SEE THE VIDEO



C1



Y1



D2



B1



I2



B2



C1



W1



C1



G2



G1



Hand Shower Holder

Y87JOS02xx - Colors
Y87JOS02C1 - Chrome

Color / Finish: B1-Blue, B2-Light Blue, D1-Black, D2-Light Gray, Gray G1-Grass Green, G2-Light Green, I1-Ivory, I2-Biscuit, P4-Plum, R1-Red, W1-White, Y1-Bright Yellow,

- 4 ½" wide, 3" deep, 2" high
- Holds all standard hand-held shower heads
- Attach to vertical or horizontal grab bars
- Adjusts and moves easily
- May be added to existing 1 ¼" grab bar
- Colors match PRO Series vinyl coated grab bars



Shower Holder with Lever Control, Removable

H51AVS07C1

Color / Finish: CF-Chrome

Materials: ABS



- 3 ¼" wide, 2 ½" deep, 3 ¾" high
- Holds all standard hand-held shower heads
- Adjusts and moves easily
- May be added to existing 1 ¼" grab bar



Shower Head, Single Jet

H51GHS51C1

- 5 ¼" wide, 2 ¾" deep, 10 ¾" high
- ABS body is chrome finish
- ½" fitting
- Anti-lime scale nozzle



Y91JOS07

- Shower Hose (ridge surface)
- 60" long
- ½" G connectors



Shower Head

Y91JOS08

- 3 ¼" wide, 6 ¾" deep, 7" high



Y91JOS07

- Shower Hose (ridge surface)
- 60" long
- ½" G connectors



Shower Head

H51GHS35

- 5" wide, 2 ¾" deep, 9 ¾" high
- Chromed head with 3 function button



H51GHS36

- Shower Hose (smooth surface)
- 69" long
- ½" G connectors



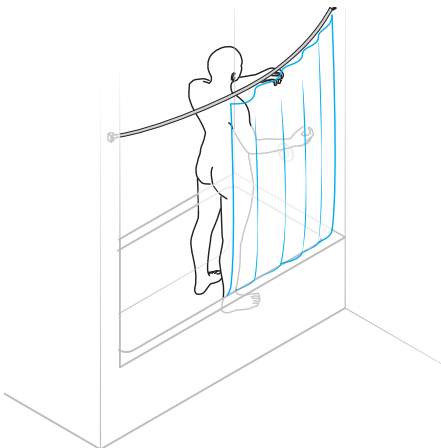
Curved Shower Curtain Rods

- C41FGM01NI** – 60" Round, Rotating Flange
- C41FGM02NI** – 72" Round, Rotating Flange
- C41FCM01NI** – 60" Oval, Fixed Flange
- C41FCM02NI** – 72" Oval, Fixed Flange

Color / Finish: NI-Satin

Materials: Zinc alloy, Brass

- Curtain rod are not adjustable or spring loaded but may be cut smaller
- Round rod has flanges that rotate for easier installation
- Oval rod has flanges that are fixed
- Curved rod allows for extra space inside the shower
- Shower rings slide easily on the curtain rod
- Two-step flange installation
- Oval rods require a minimum order of 6 each
- Optional shower curtain rings are available Y87JSS03



Oval rod
NI Satin finish
Fixed flange



Round rod
NI Satin finish
Rotating flange

Straight Shower Curtain Rod, Nylon



G02JRS08xx – 48"
G02JRS09xx – 86"

Color / Finish: W1-White, I1-Ivory, I2-Biscuit, D1-Black, D2-Light Gray, D4-Dark Gray,

Materials: Aluminum, Nylon

- Curtain rod is not adjustable or spring loaded but it may be cut to fit
- Custom sizes and colors may be ordered, allow extra delivery time
- Coordinates with PRO Series and vinyl coated grab bars
- 48" rod includes 12 shower curtain rings
- 86" rod includes 20 shower curtain rings
- Additional shower curtain rings may be ordered, Y87JSS03
- ADA rated

OPTIONAL



- **Y87JSS03N4**
- Shower Curtain Ring, Easy Slide
- Single color available – Opal / Material: Delrin
- Semi-open breakaway style will pull off rod at 75 pounds pressure
- Sold as individual rings

U-Shaped Shower Curtain Rod, Nylon

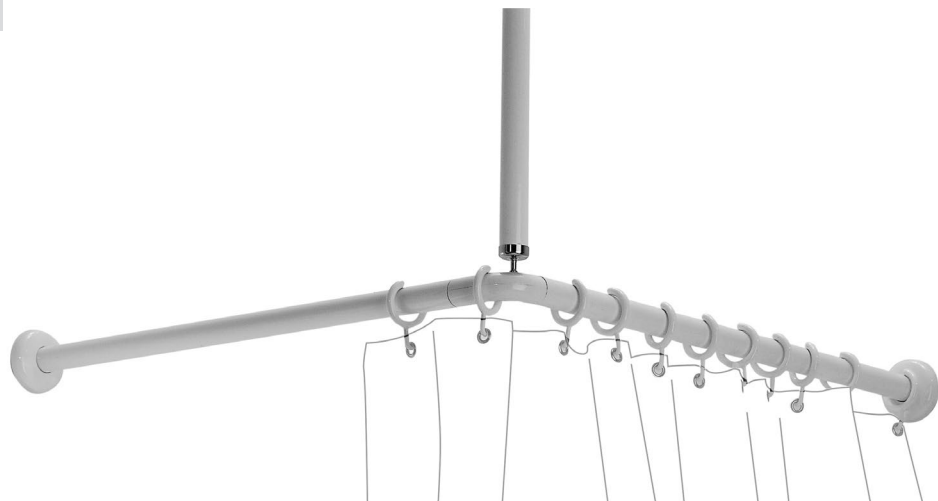


G40JRS22xx – 39"

Color / Finish: W1-White, I1-Ivory, I2-Biscuit, D1-Black, D2-Light Gray, D4-Dark Gray

Materials: Aluminum, Nylon

- Three-sided rod is 39" x 39" x 39"
- Ceiling supports prevent sag, needs 2 supports, sold separately
- Rod is not adjustable or spring loaded but may be cut smaller
- Includes 30 shower curtain rings (Y87JSS03) which slide easily on nylon
- Ceiling Supports: 23" G40JTS12xx or 39" G40JTS13xx
- Custom sizes may be ordered-allow 8 to 12 weeks
- Call for availability
- ADA Rated
- Match PRO Series Grab Bars



Corner L-Shaped Shower Curtain Rod, Nylon

G40JRS11xx – 31 ½”

Color / Finish: W1-White, I1-Ivory, I2-Biscuit, D1-Black, D2-Light Gray, D4-Dark Gray

Material: Aluminum, Nylon

- Two-sided rod is 31 ½” x 31 ½”
- Designed to fit in a corner
- Ceiling support prevents sag, needs 1 support
- Ceiling Supports: 23” G40JTS12xx or 39” G40JTS13xx
- Rod is not adjustable or spring loaded but may be cut smaller
- Includes 16 shower curtain rings (Y87JSS03)
- Custom sizes may be ordered – allow 8 to 12 weeks
- Call for availability
- ADA Rated
- Match PRO Series Grab Bars

OPTIONAL



- **Y88JNS17XX**
- Detachable joint



- **G40JTS12xx** 23 [Length]
- **G40JTS13xx** 39 [Length]
- Ceiling support




- **Y87JSS03N4**
- Shower Curtain Ring, Easy Slide
- Single color available – Opal / Material: Delrin
- Semi-open breakaway style will pull off rod at 75 lb pressure
- Sold as individual rings



G40JRS11, L-shaped shower curtain rod - G25JBR20, L-shaped grab bar

www.pontegiulio.com ☎ 877.766.8301

Ponte Giulio  43



ACCESSORIES

Ponte Giulio bathroom accessories
are designed
to give every washroom added
convenience and functionality.
The perfect finishing touch to any
bathroom.



Single



Long single



Double

Robe Hook

F17AKN03xx - Single Robe Hook

F17AKN05xx - Long Single Robe Hook - Hook is 2 inches long

F17AKN04xx - Double Robe Hook

Color / Finish: B1-Blue, B2-Light Blue, D1-Black, D2-Light Gray, G1-Grass Green, G2-Light Green, I1-Ivory, I2-Biscuit, P4-Plum, R1-Red, R7-Ruby Red, W1-White, Y1-Bright Yellow, Y3-Light Yellow

Materials: Nylon

- 2 3/4" wide, 1 3/4" deep, 1 1/2" high
- Mounts easily, hardware included



• WE



• N2



• DM



• NI

HUG Robe Hook

F18AKS02xx

Color / Finish: WE-Signal White, NI-Satin, N2-Bright, DM-Matte Black

Materials: ABS, Stainless Steel, Aluminum

- 1 5/8" wide, 2" deep, 1 5/8" high
- Round end is shiny chrome
- Select color of peg to match Prestigio Plus grab bars
- Peg mounting system like Prestigio Plus grab bars

Stainless Steel Single Robe Hook

F47AKS01C1

Color / Finish: C1-Chrome

Materials: Stainless Steel

- 1 ½" wide, 2 ¼" deep, 1 ½" high
- Mounts to wall with set screw, hardware included.



Circular Robe Hook

RHCI0001N2

Color / Finish: N2 Polished

Materials: Stainless Steel

- 1 ¾" wide, 2 ¾" deep, 2" high
- Easy wall mount installation, hardware included





Liquid Soap Dispenser

F47ACS01 – 350ml – 11,8 ounces

F47ACS02 – 190ml – 6,4 ounces

Color / Finish: C1-Chrome

Materials: Zinc alloy, Tritan

- 350ml is 2 ¾" wide, 3 ½" deep, 9 ½" high
- 190ml is 2 ¼" wide, 2 ¾" deep, 8 ½" high
- Mounts easily to wall



Soap Holder

F17AJN01xx

Color / Finish: W1-White, I1-Ivory

Materials: Nylon

- 4" wide, 4 ½" deep, 1 ½" high
- Mounts to wall easily



Removable Toilet Paper Holder

F17AGN03xx

Color / Finish: B1-Blue, B2-Light Blue, D1-Black, D2-Light Gray, G1-Grass Green, G2-Light Seafoam Green, I1-Ivory, I2-Biscuit, R1-Red, W1-White, Y1-Bright Yellow

Materials: Nylon

- 6 ⁷/₈" wide, 1 ¹/₂" deep, 6" high
- Attach to any 1 ¹/₄" diameter grab bar
- Can be removed, hang in either direction
- Colors match PRO Series and vinyl coated grab bars.
- Use spacer to remove any wobble, do not over tighten



W1 - White



I1 - Ivory



D1 - Black



B1 - Blue



Toilet Paper Holder, Wall Mount

F17AGN04xx



Color / Finish: B1-Blue, B2-Light Blue, D1-Black, D2-Light Gray, G1-Grass Green, G2-Light Green, I1-Ivory, I2-Biscuit, R1-Red, W1-White, Y1-Bright Yellow

Materials: Nylon

- 6" wide, 1 ½" deep, 5" high
- Mounts to wall easily
- Reversible, can hang opening to either side
- Colors match PRO Series and vinyl coated grab bars.



Stainless Steel Toilet Paper Holder

F47AGS03C1

Color / Finish: C1-Chrome

Materials: Stainless Steel, ABS

- 7 ½" wide, 4 ½" deep, 2" high
- Mounts to wall with set screws



Combination Grab Bar and Toilet Paper Holder

G18UGS05xx – With Shelf

G18UGS06xx – Open Bottom



Color / Finish: N1–Satin Brushed, N2–Polished

Materials: Stainless Steel

- With Shelf: 18" long x 6 3/4" wide x 3 1/4" deep
- Open Bottom: 13" long x 6 3/4" wide x 3 1/4" deep
- Shelf can hold an extra roll of toilet paper or other items
- 550-pound load capacity when installed into studs or blocking
- Mounting points 5 1/2" apart
- Sleek, designer style matches the Prestigio PLUS grab bars
- Grab bar has a 1 1/4" diameter and is made of 304 stainless steel
- ABS spring-loaded cylinder holds toilet paper
- Available in Satin Brushed or Polished finish





Stainless Steel Vertical Toilet Paper Holder

F47AGS02C1

Color / Finish: CF-Chrome

Materials: Stainless Steel

- 1 ⁵/₈" wide, 3" deep, 6" high
- Mounts to wall with set screw



Circle Toilet Paper Holder

TPHCI001xx

Color / Finish: N2 Polished, DM-Matte Black

Materials: Stainless Steel

- 2" wide, 2 ³/₄" deep, 6 ¹/₂" high
- Easy wall mount installation, hardware included
- Can install vertical or horizontal



Column Toilet Paper Holder

TPHCO001xx

Color / Finish: N1 Satin, N2 Polished, DM-Matte Black

Materials: Stainless Steel

- 6 ¹/₂" wide, 2" deep, 4" high
- Easy wall mount installation, hardware included

Column Expandable Toilet Paper Holder



ETPHCO01xx

Color / Finish: N1 Satin, N2 Polished, DM-Matte Black

Materials: Stainless Steel

- 9" wide, 3" deep, 2" high
- Easy wall mount installation, hardware included

Towel Bar with Top Shelf, Stainless Steel

F47APS01xx

Color / Finish: N1 Satin, N2 Polished,

Materials: Stainless Steel



- 25" wide, 7 ¾" deep, 4 ½" high, bar itself is 1/2" diameter
- 22+ pound load capacity
- Keep towels organized. Hardware included for wood stud installation.

HUG Storage Container for Grab Bars

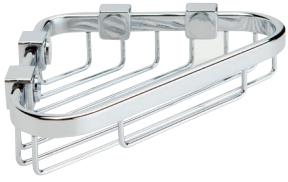
F47ANS02 W1

Color / Finish: W1-White

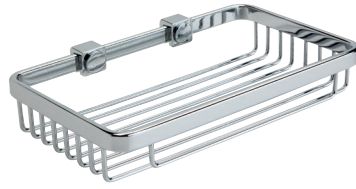
Materials: Polyurethane



- Can be mounted on any horizontal or vertical grab bar 1 ¼ diameter
- Easy to insert or remove
- Available in white
- 10 ¾" wide x 4" deep x 2 ¾" high



Triangular



Rectangular

Stainless Steel Corner Basket

F41AJM01C1 – Triangular
 F41AJM02C1 – Rectangular

Color / Finish: C1 – Chrome

Materials: Stainless Steel

- 6" each side, 1 ½" high – Triangular
- 8" wide, 5" deep, 1 ½" high – Rectangular
- Mounts securely to wall



Corner Shelf



Corner Angled Shelf Right



Corner Angled Shelf Left



Straight Wall Curved Shelf

Stainless Steel Shelves with Assist Bar, Vinyl Coated

G02AOS01xx – Corner Shelf
 G02AOL02xx – Corner, Angled Shelf Left
 G02AOR02xx – Corner Angled Shelf Right
 G02AOS03xx – Straight Wall Curved Shelf

Color / Finish: W1-White, I1-Ivory, I2-Biscuit, D1-Black, D2-Light Gray

Materials: Stainless steel, Vinyl

- Super strong combination shelf and grab bar
- Select color for grab bar, the shelf is stainless steel
- 250-pound load capacity and higher



Circle Towel Bar

TBCI0001xx

Color / Finish: N2 Polished, DM Matte Black

Materials: Stainless Steel

- 26" wide, 3" deep, 2" high
- Easy wall mount installation, hardware included
- 22-pound load capacity. This is a decorative towel bar and not a grab bar.

Grab BAR can
be installed
and used as
towel bars



Column Towel Bar

TBCO0001xx

Color / Finish: N1 Satin, N2 Polished, DM Matte Black

Materials: Stainless Steel

- 26" wide, 3" deep, 2" high
- Easy wall mount installation, hardware included
- 22-pound load capacity. This is a decorative towel bar and not a grab bar.



Circle Hanging Towel Holder

THCI0001xx

Color / Finish: N2 Polished, DM Matte Black

Materials: Stainless Steel

- 6 ¼" wide, 3" deep, 6 ⅛" high
- Easy wall mount installation, hardware included
- 22-pound load capacity. Decorative towel holder, not a grab bar.



Column Hanging Towel Holder

THCO0001xx

Color / Finish: N1 Satin, N2 Polished, DM Matte Black

Materials: Stainless Steel

- 6 ⅝" wide, 2" deep, 6 ⅝" high
- Easy wall mount installation, hardware included
- 22-pound load capacity. Decorative towel holder, not a grab bar.

Grab Bar with Shelf

G57JES01xx – 18"

Color / Finish: N1 – Satin Brushed, N2 – Polished, DM – Matte Black

Materials: Stainless Steel



- 18" wide, 4 ¼" high, 5 ¼" deep
- 1 ¼" diameter grab bar
- 300 pound load capacity
- Shelf is 14 ½" wide x 4" deep at center
- Extra storage space with a grab bar



Curved Grab Bar and Toilet Paper Holder

G57JER03xx- Right

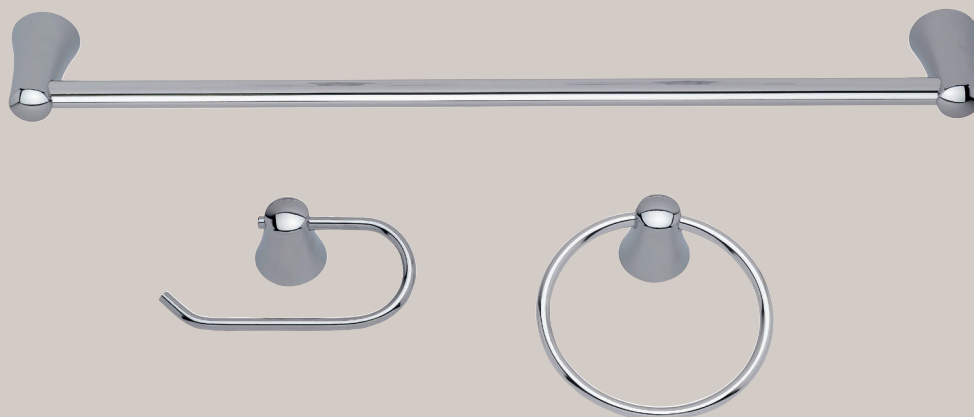
Color / Finish: N1 – Satin Brushed, N2 – Polished, DM – Matte Black

Materials: Stainless Steel

- 16 ½" wide, 9 ½" high
- Bar is 1 ¼" diameter
- Use the top and curve section as a grab bar
- Holds a roll of toilet paper on the bottom bar
- 331 pound load capacity
- Could install horizontally, vertically or at a slight angle



 KIT "Column"



Column Bathroom Accessory Kit 1

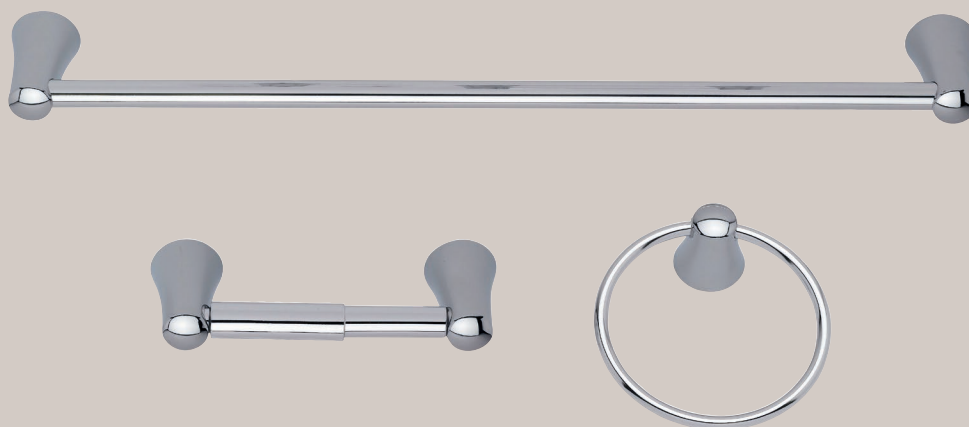
WKCO0001xx

Color / Finish: N1 Satin, N2 Polished, DM-Matte Black

Materials: Stainless Steel

- Includes Toilet Paper Holder, Towel Bar and Hanging Towel Holder
- Decorative products, not to be used as grab bars

 KIT



Column Bathroom Accessory Kit 2

WEKCO001xx

Color / Finish: N1 Satin, N2 Polished, DM-Matte Black

Materials: Stainless Steel

- Includes Expandable Toilet Paper Holder, Towel Bar and Hanging Towel Holder
- Decorative products, not to be used as grab bars



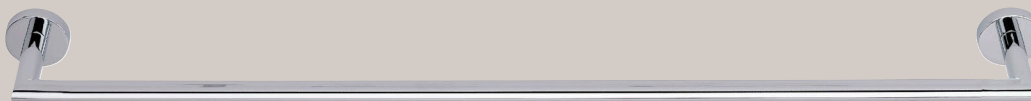
Circle Bathroom Accessory Kit

WKCI0001xx

Color / Finish: N2 Polished, DM-Matte Black

Materials: Stainless Steel

- Includes Robe Hook, Toilet Paper Holder, Towel Bar and Hanging Towel Holder
- Decorative products, not to be used as grab bars
- Save money by purchasing the complete kit



Towel bar



Robe hook



Toilet Paper holder



Hanging Towel holder

FASTENERS



Wingits Commercial BEAST Fastener

Y96SES58N1

Color / Finish: NI Satin

Materials: Stainless Steel, 3M VHB Waterproof adhesive

- Water and fire resistant
- Exceeds ADA load capacity requirements and all building codes
- Rated up to 800LB in drywall with tile
- Use drill Bit Y96SFS02
- Purchase 2 for Grab Bar installation
- Works with fiberglass surrounds

OPTIONAL



- **Y96SFS02**
- Commercial Beast Fastener
- 1 1/4" drill bit



Wingits Grab Bar Fastener

Y96SES56

Color / Finish: N.A.

Materials: N.A.

- Exceeds ADA load capacity requirements and all building codes
- Rated up to 600LB in drywall with tile
- Drill Bit part number: Y96SFS01

OPTIONAL



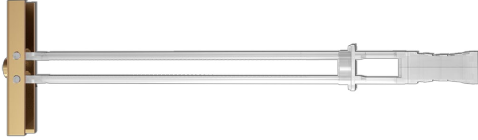
- **Y96SFS01**
- Standard Fastener 3/4" drill bit
- 3/8" drill bit

Snap Toggle Bolt Anchors

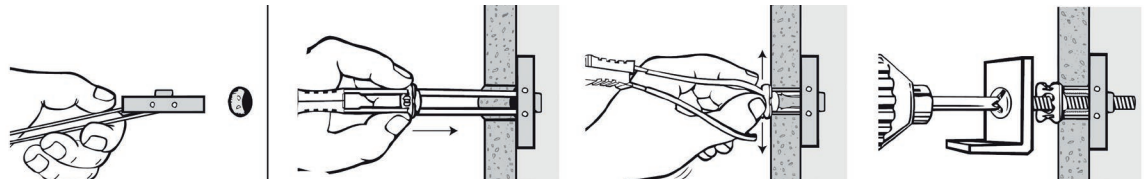
Y96SES60

Color / Finish: Stainless Steel & Plastic

Materials: N.A.



- Snap Toggles allow installation into hollow walls – a great alternative when wood studs are not available.
- Must have 1 7/8" clearance behind the wall
- Set of 4 Snap Toggles with 304 stainless steel channels and bolts – for one grab bar installation
- Purchase one set for each grab bar being installed
- BAS 3/16" – 24 Snap Toggle (4)
- Made in USA
- Easy to install:



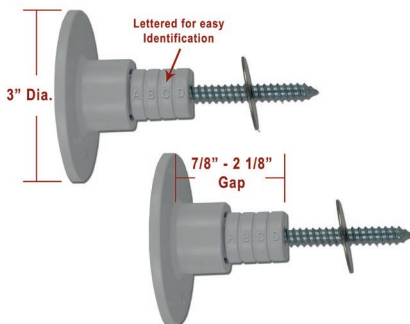
- 1- Slide the metal channel into a pre-drilled 1/2" hole
- 2- Hold the ends of the straps and pull toward you until the channel rests flush behind the wall.
- 3- Pull back on the straps and slide the plastic cap along the straps until the cap is flush with the wall.
- 4- Push straps side to side, snapping off the straps level with the wall
- 5- Place the grab bar over the flange, insert bolt through grab bar flange and tighten until flush.

The Solid Mount® Anchor System

Y96SES66

Color / Finish: N.A.

Materials: N.A.



- The Solid Mount® fills the 7/8" to 2 1/8" open space behind a fiberglass shower surround to the stud.
- One (1) Solid Mount Set is needed for each grab bar being installed.
- Supports a weight capacity of 300 pounds
- Installation takes about one hour
- The Solid Mount Set includes: 2 – 3" diameter mounting plates, 2 – adjustable thread mounting shafts, 2 – 5/8" lag bolts, 6 – stainless steel screws and 2 – stainless steel washers.
- Watch the installation video before installing – see QR Code



ALPHANUMERIC INDEX

This is a list of product part number codes, in alphanumeric order, with page numbers. Each code is associated with the page number in which the article is described.

CODE	PAGE
B40CMS01WB	18
B40CMS07WB	16
B40CMS10WB	16
B41DCL33	23
B41DCR33	23
B41DCS01	10
B41DCS38	16
B41DDS26	14
B42CNS01WB	12
B43CMS01WB	10
B43CMS03	14
B46CML23W3	24
B46CMM17W3	20
B46CMM18W3	20
B46CMR23W3	24
B46CNM22W3	22
B48CMM01WM	23
C41FCM01N1	40
C41FCM02N1	40
C41FGM01N1	40
C41FGM02N1	40
C53FBS21	30
ETPHCO01xx	53
F17AGN03xx	49
F17AGN04xx	50
F17AJN01xx	48
F17AKN03xx	46
F17AKN04xx	46

CODE	PAGE	CODE	PAGE
F17AKN05xx	46	H51GHS35	39
F18AKS02xx	46	H51GHS36	39
F18XOS01xx	32	H51GHS51C1	38
F18XOS03xx	32	H51GIS04	32
F18XOS05DM	34	H52HAS22	22
F18XOS07DM	34	H52HAS24	10
F18XOS41xx	35	RHCI0001N2	47
F18XOS43xx	35	TBCI0001xx	55
F41AJM01C1	54	TBCO0001xx	55
F41AJM02C1	54	THCI0001xx	56
F47ACS01	48	THCO0001xx	56
F47ACS02	48	TPHCI001xx	52
F47AGS02C1	52	TPHCO001xx	52
F47AGS03C1	50	WEKCO001xx	58
F47AIS01xx	24	WKCI0001xx	59
F47AIS02xx	24	WKCO0001xx	58
F47AKS01C1	47	Y87JOS02C1	37
F47AML03N2	23	Y87JOS02xx	37
F47AMR03N2	23	Y87JOS04C1	36
F47ANS02	53	Y87JOS04xx	36
F47APS01	53	Y87JSS03N4	41
G02AOL02xx	54	Y88JNS17XX	42
G02AOR02xx	54	Y90SES42	12
G02AOS01xx	54	Y91JOS07	38
G02AOS03xx	54	Y91JOS07	39
G02JRS08	41	Y96SES56	60
G02JRS09	41	Y96SES58N1	60
G18UGS05xx	51	Y96SES60	61
G18UGS06xx	51	Y96SES66	61
G40JRS11xx	42	Y96SFS01	60
G40JRS22xx	41	Y96SFS02	60
G40JTS12xx	42		
G40JTS13xx	42		
G57JER03xx	57		
G57JES01	56		
H51AVS07C1	38		

LIST OF MATERIALS

ABS Acrylonitrile butadiene styrene or ABS is a common thermoplastic polymer. It offers mechanical resistance and physical stability. This plastic is resistant to impacts and corrosive chemicals, features a lovely shiny surface, is non-toxic and can be recycled.

ACRYLIC STONE This composite, synthetic material blends the features of natural elements such as stone, with the advantage of being manufactured in any shape. Generic term for Corian by DuPont or LG Hi Macs. Solid surface, durable, easy-to-clean, non-porous material so stains do not penetrate the surface. Used to manufacture sinks, shower trays and accessories.

ALUMINUM It is extremely soft, light, and resistant to oxidation thanks to a thin layer of oxide on the surface which prevents the oxygen from corroding the metal beneath. Aluminum is strong, corrosion resistant and will not rust.

HIGH PRESSURE LAMINATE (HPL) Compression molded laminated plastic, excellent strength and stability, ARC and solvent resistance. Used for commercial products that must stand up to non-stop use. Also called PHENOLIC.

MINERAL COMPOSITE It is a synthetic material formed by at least 75% of stone from the Dolomites. It is an ecological material, chemical resistant, durable with high impact strength and outstanding electrical insulation. Used to manufacture sinks and shower trays.

NYLON A synthetic polymer, thermoplastic material that is injection molded. This tough, strong, easy to clean material is also soft and comfortable. Used to manufacture flange covers & slats for some seats. Also called POLYAMIDE.

POLYETHYLENE (PE) Polyethylene is a synthetic polymer and the most common plastic. Ponte Giulio uses PE-LD, low density version in products. It is flexible, soft and tough, it may be recycled and is safe.

POLYURETHANE (PU or PUR) Is a polymer. It is soft, comfortable, durable, lightweight and easy to clean. Used in production of shower seats.

PORCELAIN Hard porcelain is a mixture of feldspar, kaolin and quartz. It undergoes a firing process with temperatures between 1000°C and 1500°C where it acquires features such as resistance to scratches, impacts and chemical agents. Ponte Giulio uses porcelain to produce sinks, the white ceramic is durable, smooth, easy to clean with natural beauty.

SAFETY GLASS Used in shower enclosures, safety glass is less likely to break or cause injury if it does break. Safety or tempered glass is 5 to 10 times stronger than regular glass.

STAINLESS STEEL Stainless steel is an iron alloy which provides resistance to corrosion especially when used in damp environments or with fresh water. Ponte Giulio uses stainless steel will not rust, is durable, tough and strong and less likely to ding or burr.

STEEL It is an alloy composed mainly by steel and up to 1.7% of carbon. Steel is commonly referred to as "Iron". It is lightweight and very strong.

STAINLESS STEEL Stainless steel is an iron alloy which provides resistance to corrosion especially when used in damp environments or with fresh water. Ponte Giulio uses stainless steel that will not rust, is durable, tough and strong and less likely to ding or burr.

TEAK Teak is a tree species - Verbenaceae - characterized by a straight, regular trunk. The wood has a medium to low hardness, low shrinkage and high stability, especially when seasoned. The presence between the fibers of an oily resin gives a perception of "grease" to the touch, this characteristic ensures excellent durability; it resists moisture, saltiness, acids and attacks by insects and fungi well.

VINYL Is the world's most versatile plastic, it is soft and warm to the touch, when used to produce grab bars, it seals and prevents water from reaching the steel pipe. Vinyl grab bars offer a superior grip. Ponte Giulio treats their vinyl with BioCote, making it anti-microbial.

ZINC-PLATED STEEL Zinc-plating is a surface coating that will prevent corrosion and rust. It is strong, durable and used in Ponte Giulio mounting systems, hinges and product frames.

ECOLOGY

This document has been produced with the greatest possible respect for the environment. We also suggest that those who will be using it contribute to this by passing it on to other people after consultation, or by recycling it.

WARNING

The information and data provided in this document, even if verified and compiled with the utmost care, cannot be considered binding.

Ponte Giulio reserves the right to make changes, even without notice, in order to improve the characteristics of its products.

COLOPHON

Project

Becky Wright, Fotostudio Mauro Mattioli, Stefano Monelli

Style

Fotostudio Mauro Mattioli, Stefano Monelli

Project supervision

Enrico Carloni, Adriano Scutigliani

Data verification

Stefano Monelli, Marco Ragno, Becky Wright

Layout

Fotostudio Mauro Mattioli

Photographs

Fotostudio Mauro Mattioli

Infographics and illustrations

Stefano Monelli, Fotostudio Mauro Mattioli

Printed in Italy

Modulgrafica Forlivese S.p.A

Document identifier

GECA.US.10.20, © Ponte Giulio S.p.A.

Ponte Giulio USA, Inc

W241 S4021 Rockwood Circle

Waukesha, WI 53189 USA

☎ 1.877.766.8301

☎ 1.877.766.8306

🌐 www.pontegiulio.com

@ usa@pontegiuliousa.com

Ponte Giulio S.p.A.

Località Ponte Giulio 05018 Orvieto (TR) Italy

☎ +39 0763 316044

☎ +39 0763 316043

🌐 www.pontegiulio.it

