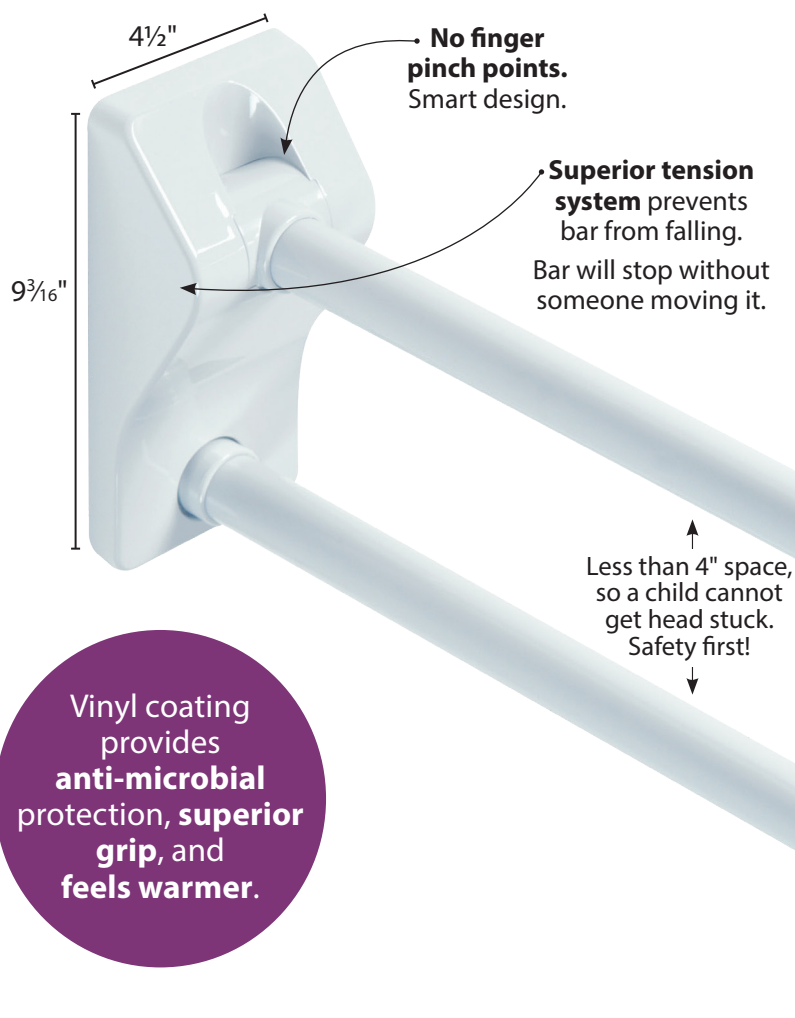




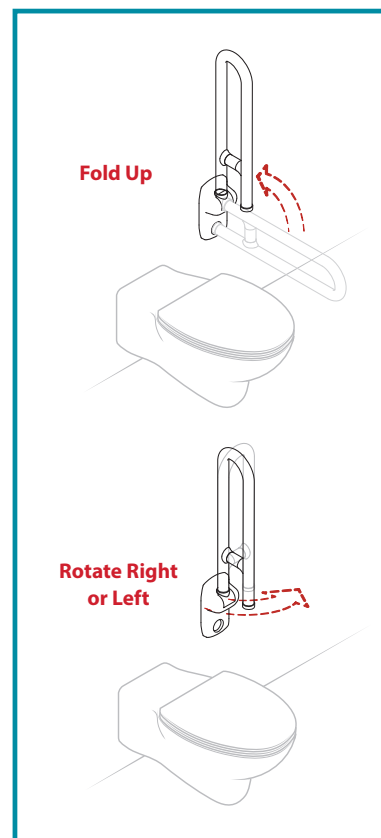
Ponte Giulio has been designing and manufacturing **folding grab bars** for decades and that experience shows in the little details incorporated into their grab bars.

LITTLE DETAILS MAKE A BIG DIFFERENCE

- **Anti-microbial** properties incorporated into the vinyl will reduce 99.9% of bacteria, microbes and fungi for a significantly cleaner bathroom.
- Available in three different lengths **24"**, **28"** and **34"** to accommodate a variety of location situations.
- The option of **folding and rotating** means that the grab bar will fold up and then when in the upright position, will rotate so it lays flat against the wall.
- These folding grab bars have been **designed not to break** and are backed up with the Ponte Giulio **lifetime warranty** – if it breaks, it will be replaced.



Vinyl coating provides **anti-microbial** protection, **superior grip**, and **feels warmer.**



Folding and Rotating Grab Bar with No-Pinch Flange

G41JCS01xx 24", 330 lb. load capacity
G41JCS03xx 28", 330 lb. load capacity
G41JCS46xx 34", 220 lb. load capacity

Folding Grab Bar with No-Pinch Flange

G41JCS09x 24", 330 lb. load capacity
G41JCS10xx 28", 330 lb. load capacity
G41JCS47xx 34", 220 lb. load capacity

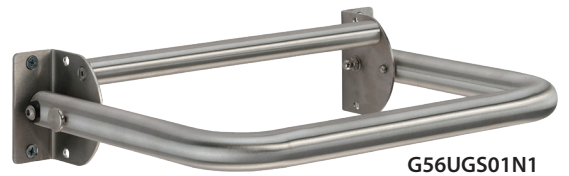
Folding Grab Bar with Floor Support Leg and No-Pinch Flange

G41JCS18xx 24", 330 lb. load capacity
G41JCS19xx 28", 330 lb. load capacity
G41JCS20xx 34", 265 lb. load capacity

INTRODUCING ...

Stainless Steel Locking Support Grab Bar

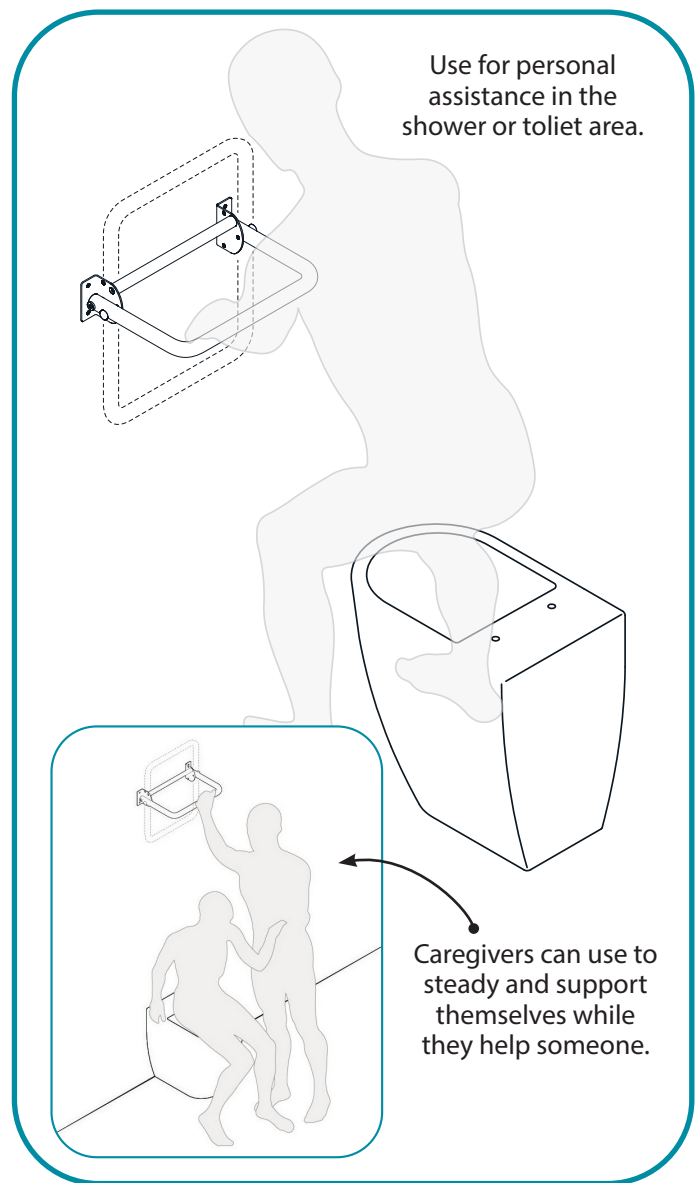
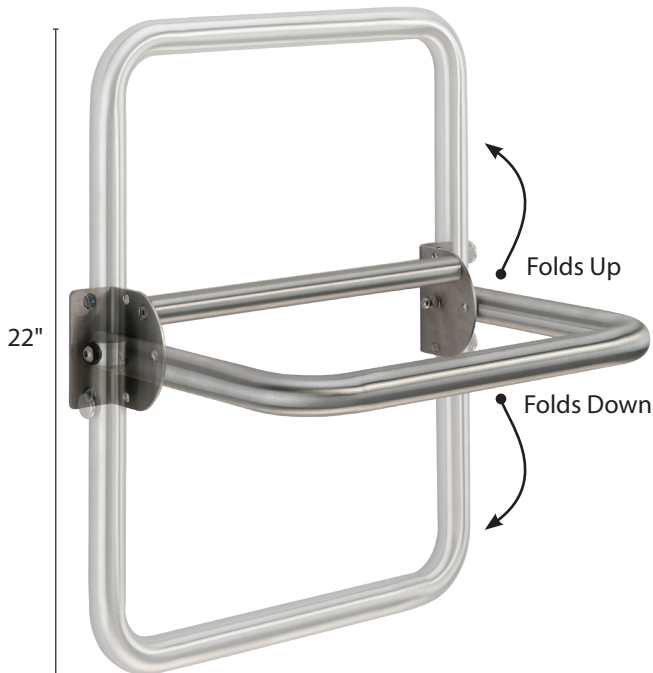
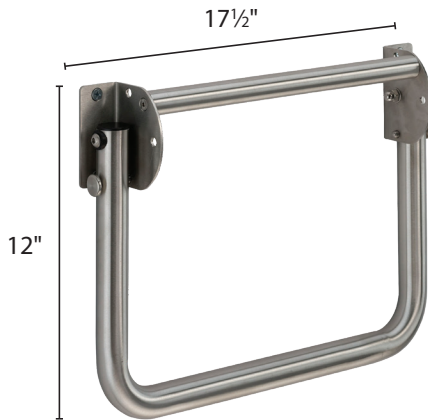
- Designed for when someone needs help PULLING themselves up from a seated position.
- This unique grab bar is 17½" wide and 12" deep, folds up or down for storage and easily locks in place with a pin.
- Mount across from the toilet and use to pull up from sitting or lower onto the toilet.
- Use in the shower and never worry about rust due to Stainless Steel construction.
- Help caregivers to steady and support themselves.
- Designed for pulling and lowering.
- Two finishes: N1 Satin/Brushed Nickel and W2 Painted White.
- 450-lb. horizontal (pulling) capacity and 250-lb. vertical load capacity.



G56UGS01N1
Satin / Brushed Nickel Finish



G06UGS01W2
Painted White Finish



Count on Ponte Giulio for all your Bathroom Safety Products.
For more information or to order a Folding Grab Bar, call 262-522-6687 or
email becky.wright@PonteGiulioUSA.com